

DEMOLITION NOTES

- 1.01 ADD-ALTERNATE 6: REMOVE & DISPOSE OF (E) CONCRETE COURTYARD PATIO SLAB AND (E) TERRAZZO TILE. TYP. CONTRACTOR TO PROTECT (E) BUILDING FOUNDATION IN PLACE. TYP. MODIFY (E) GRADING AS REQUIRED FOR (E) CONCRETE COURTYARD PATIO SLAB TO ACHIEVE MINIMUM 2% SLOPE TO (E) THROUGH-WALL SCUPPER. TYP.
- 1.02 REMOVE & DISPOSE OF (E) CONCRETE TRELLIS COLUMN. TYP.
- 1.03 REMOVE & DISPOSE OF (E) WOOD TRELLIS ASSEMBLIES, INCLUDING ALL POSTS, LEDGERS, FASTENERS, AND HARDWARE. TYP. SEAL ALL PENETRATIONS THROUGH WEATHERPROOFING MEMBRANES WITH APPROVED SEALANT. TYP.
- 1.04 REMOVE & DISPOSE OF (E) DECK COATING SYSTEM. TYP. REMOVE & REPLACE DAMAGED (E) PLYWOOD SHEATHING AS REQUIRED - NOTIFY OWNER'S REPRESENTATIVE PRIOR TO REMOVAL OF ANY (E) PLYWOOD. DAMAGED (E) PLYWOOD SHALL BE REPLACED ON A UNIT COST BASIS. TYP. MODIFY (E) PLYWOOD SUBSTRATE AS REQUIRED TO ACHIEVE MINIMUM 1% SLOPE TO DRAIN. PREPARE (E) SUBSTRATE TO RECEIVE (E) PEDESTRIAN TRAFFIC COATING SYSTEM PER MANUFACTURER'S REQUIREMENTS. TYP.
- 1.05 REMOVE & DISPOSE OF (E) CONCRETE TILES & UNDERLAYMENT. PROTECT (E) SUBSTRATE IN PLACE. TYP. PREPARE (E) SUBSTRATE TO RECEIVE (E) UNDERLAYMENT PER MANUFACTURER'S REQUIREMENTS. TYP.
- 1.06 REMOVE & DISPOSE OF (E) MEMBRANE ROOFING SYSTEM AT LOW SLOPED ROOF AREAS. PROTECT (E) SUBSTRATE IN PLACE. TYP. MODIFY (E) SUBSTRATE AS REQUIRED TO ACHIEVE MINIMUM 2% SLOPE TO DRAINS. SEE ROOF PLAN FOR LOCATIONS OF (E) DRAINS. TYP. PREPARE (E) SUBSTRATE TO RECEIVE (E) SINGLE-PLY PVC ROOFING MEMBRANE PER MANUFACTURER'S REQUIREMENTS. TYP.
- 1.07 REMOVE & DISPOSE OF ALL (E) SHEET METAL COMPONENTS, INCLUDING COPINGS, HEAD FLASHINGS, TRANSITIONAL FLASHINGS, WEEP SCREEDS AND SILL PANS. TYP. PREPARE (E) FRAMING RECEIVE (E) SHEET METAL COMPONENTS. TYP.
- 1.08 REMOVE & DISPOSE OF (E) SCUPPERS, GUTTERS AND DOWNSPOUTS. TYP.
- 1.09 REMOVE & DISPOSE OF (E) WINDOW SYSTEMS, INCLUDING ALL HARDWARE. TYP. MODIFY (E) FRAMING AS REQUIRED TO RECEIVE (E) WINDOW SYSTEMS. TYP.
- 1.10 REMOVE & DISPOSE OF (E) DOOR SYSTEMS, INCLUDING ALL HARDWARE. TYP. MODIFY (E) FRAMING AS REQUIRED TO RECEIVE (E) DOOR SYSTEMS. TYP.
- 1.11 REMOVE & DISPOSE OF (E) SKYLIGHT SYSTEM. TYP. PREPARE (E) FRAMING TO RECEIVE (E) SKYLIGHT SYSTEM. TYP.
- 1.12 REMOVE & DISPOSE OF (E) EXTERIOR PLASTER SYSTEM AS REQUIRED TO INSTALL (E) FLASHINGS, WINDOW, DOOR & VENT ASSEMBLIES. PROTECT UNDERLYING (E) FRAMING & (E) WEATHERPROOFING MEMBRANES IN PLACE & PREPARE FOR THE (E) IN (E) WEATHERPROOFING MEMBRANES. TYP.
- 1.13 REMOVE (E) EXTERIOR PLASTER FINISH COAT & PREPARE (E) BROWN COAT TO RECEIVE (E) ACRYLIC-FORTIFIED FINISH COAT PER MANUFACTURER'S REQUIREMENTS. TYP. PROTECT (E) PLASTER BROWN COAT, SCRATCH COAT, METAL LATH SYSTEM, AND WEATHER RESISTIVE BARRIER IN PLACE. TYP.
- 1.14 REMOVE & DISPOSE OF (E) INTERIOR FINISHES AS REQUIRED TO INSTALL (E) WINDOW, DOOR & VENT ASSEMBLIES. TYP.
- 1.15 REMOVE & DISPOSE OF (E) WALL VENT & HOOD ASSEMBLIES. PREPARE (E) FRAMING TO RECEIVE (E) VENTS. TYP.
- 1.16 REMOVE, STORE & PROTECT EXISTING WALL-MOUNTED NUMBERS & OTHER MISCELLANEOUS SIGNAGE DURING CONSTRUCTION. TYP. CLEAN & REINSTALL AT (E) LOCATIONS WHEN REPAIR WORK IS COMPLETED. TYP.
- 1.17 REMOVE, STORE & PROTECT (E) SOLAR PANELS DURING CONSTRUCTION. CLEAN & REINSTALL AT (E) LOCATIONS WHEN INSTALLATION OF (E) SUPPORTS IS COMPLETED. TYP.
- 1.18 REMOVE & DISPOSE OF (E) ROOF DRAIN ASSEMBLIES. CAP (E) PLUMBING INSIDE WALL & PATCH WALL FINISHES. TYP. PREPARE (E) ROOF SUBSTRATE TO RECEIVE (E) ROOF DRAINS. TYP.
- 1.19 REMOVE, STORE & PROTECT (E) WALL-MOUNTED FIXTURES. CAP & REWIRE EXPOSED WIRING AS REQUIRED DURING CONSTRUCTION. TYP. CLEAN & REINSTALL FIXTURES AT (E) LOCATIONS WHEN REPAIR WORK IS COMPLETED. TYP.
- 1.20 REMOVE (E) PLASTER FINISH COAT & PREPARE (E) BROWN COAT TO RECEIVE (E) ACRYLIC FORTIFIED PLASTER FINISH COAT PER MANUFACTURER'S REQUIREMENTS. TYP.

THESE DRAWINGS ARE NOT AS-BUILT. DO NOT SCALE THESE DRAWINGS. THESE DRAWINGS REPRESENT THE CURRENT STATE OF THE BUILDING AS OF THE DATE OF THE LAST REVISION. THE CONTRACTOR SHALL VERIFY THE EXISTING CONDITIONS AND CONDITIONS OF THE BUILDING PRIOR TO CONSTRUCTION. THE CONTRACTOR SHALL BE RESPONSIBLE FOR OBTAINING ALL NECESSARY PERMITS AND APPROVALS FROM THE APPROPRIATE AGENCIES. THE CONTRACTOR SHALL BE RESPONSIBLE FOR OBTAINING ALL NECESSARY PERMITS AND APPROVALS FROM THE APPROPRIATE AGENCIES. THE CONTRACTOR SHALL BE RESPONSIBLE FOR OBTAINING ALL NECESSARY PERMITS AND APPROVALS FROM THE APPROPRIATE AGENCIES. THE CONTRACTOR SHALL BE RESPONSIBLE FOR OBTAINING ALL NECESSARY PERMITS AND APPROVALS FROM THE APPROPRIATE AGENCIES.

Consultants:

Stamps:

Project:

**UCSB FACULTY
HOUSING
RENOVATION**

UCSB
SANTA BARBARA, CALIFORNIA

**PRELIMINARY
50% CD SET**

**NOT FOR
CONSTRUCTION**

Drawing Title:

**ADD-ALT 1ST FLOOR
DEMOLITION PLAN**

Revision Number Date

Issued for UCSB review 4/10/2009

Fremer Project No: 07006.00

Approved: _____

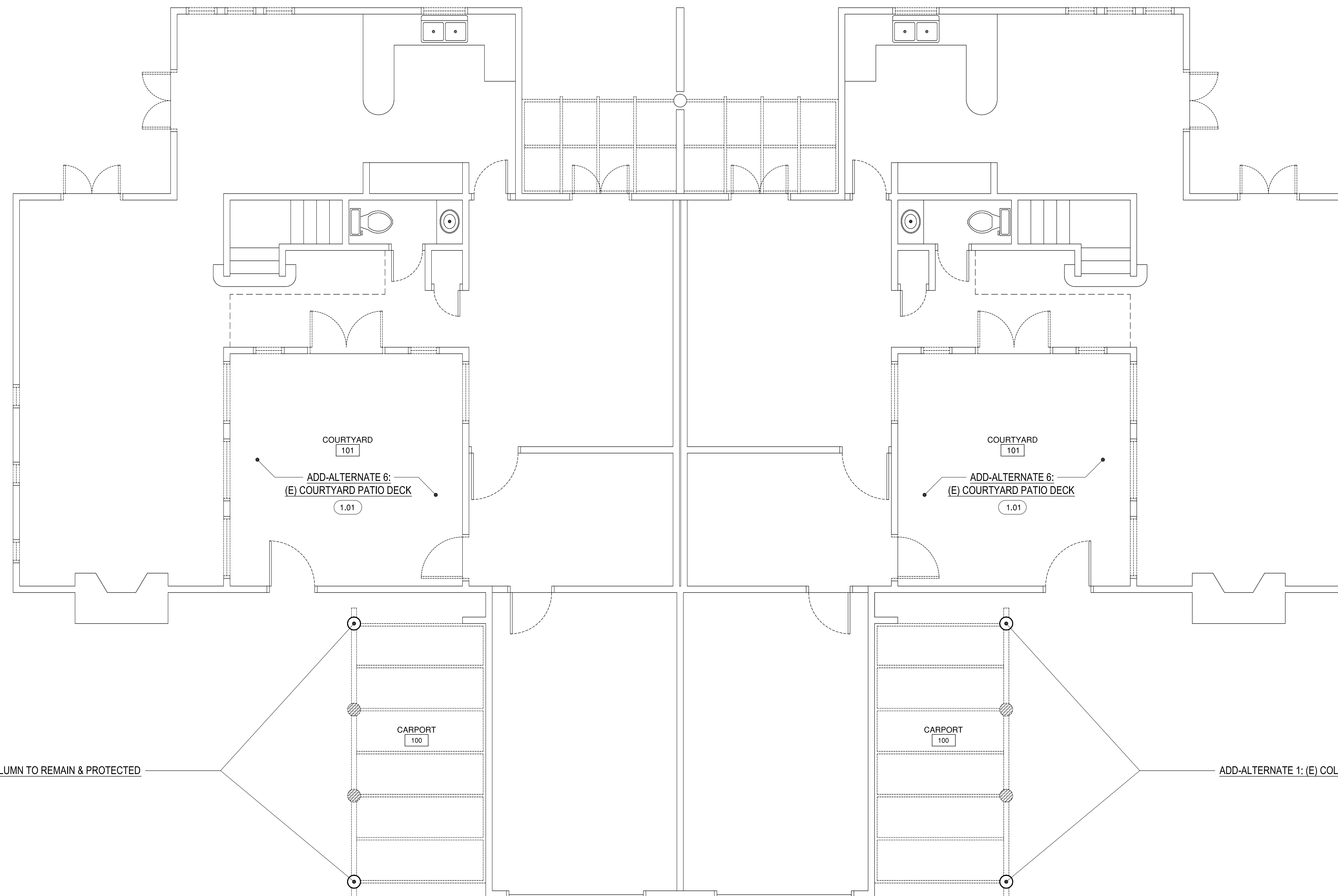
Drawn By: _____

Scale: 05 noted

Date: FEBRUARY 11, 2009

Sheet:

D2.01ALT



UNIT 918

UNIT 917

A **ADD-ALTERNATE FIRST FLOOR DEMOLITION PLAN**
SCALE: 1/4"=1'-0"