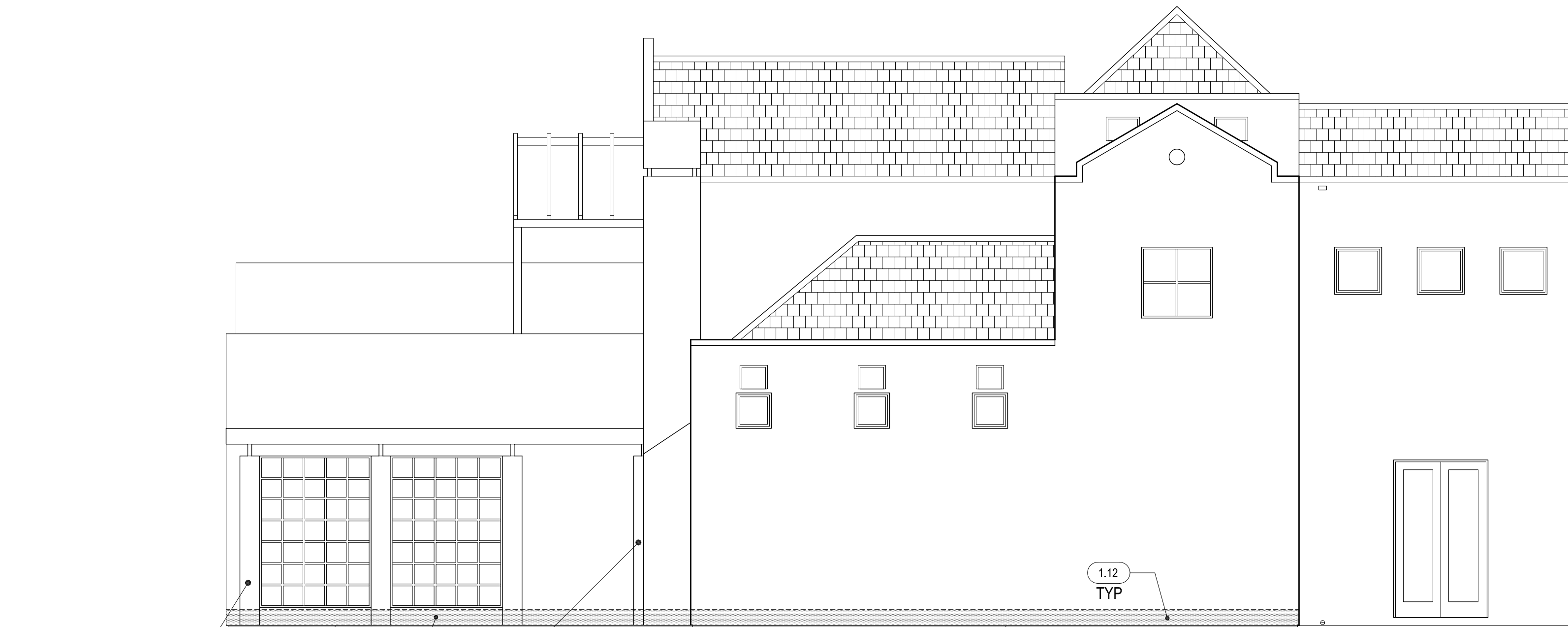


DEMOLITION NOTES

- 1.01 ADD-ALTERNATE 6: REMOVE & DISPOSE OF (E) CONCRETE COURTYARD PATIO SLAB AND (E) TERRAZZO TILE. TYP. CONTRACTOR TO PROTECT (E) BUILDING FOUNDATION IN PLACE. TYP. MODIFY (E) GRADING AS REQUIRED FOR (E) CONCRETE COURTYARD PATIO SLAB TO ACHIEVE MINIMUM 2% SLOPE TO (E) THROUGH-WALL SCUPPER. TYP.
- 1.02 REMOVE & DISPOSE OF (E) CONCRETE TRELLIS COLUMN. TYP.
- 1.03 REMOVE & DISPOSE OF (E) WOOD TRELLIS ASSEMBLIES, INCLUDING ALL POSTS, LEDGERS, FASTENERS, AND HARDWARE. TYP. SEAL ALL PENETRATIONS THROUGH WEATHERPROOFING MEMBRANES WITH APPROVED SEALANT. TYP.
- 1.04 REMOVE & DISPOSE OF (E) DECK COATING SYSTEM. TYP. REMOVE & REPLACE DAMAGED (E) PLYWOOD SHEATHING AS REQUIRED - NOTIFY OWNER'S REPRESENTATIVE PRIOR TO REMOVAL OF ANY (E) PLYWOOD. DAMAGED (E) PLYWOOD SHALL BE REPLACED ON A UNIT COST BASIS. TYP. MODIFY (E) PLYWOOD SUBSTRATE AS REQUIRED TO ACHIEVE MINIMUM 1% SLOPE TO DRAIN. PREPARE (E) SUBSTRATE TO RECEIVE (E) PEDESTRIAN TRAFFIC COATING SYSTEM PER MANUFACTURER'S REQUIREMENTS. TYP.
- 1.05 REMOVE & DISPOSE OF (E) CONCRETE TILES & UNDERLAYMENT. PROTECT (E) SUBSTRATE IN PLACE. TYP. PREPARE (E) SUBSTRATE TO RECEIVE (E) UNDERLAYMENT PER MANUFACTURER'S REQUIREMENTS. TYP.
- 1.06 REMOVE & DISPOSE OF (E) MEMBRANE ROOFING SYSTEM AT LOW SLOPED ROOF AREAS. PROTECT (E) SUBSTRATE IN PLACE. TYP. MODIFY (E) SUBSTRATE AS REQUIRED TO ACHIEVE MINIMUM 2% SLOPE TO DRAIN. SEE ROOF PLAN FOR LOCATIONS OF (E) DRAINS. TYP. PREPARE (E) SUBSTRATE TO RECEIVE (E) SINGLE-PLY PVC ROOFING MEMBRANE PER MANUFACTURER'S REQUIREMENTS. TYP.
- 1.07 REMOVE & DISPOSE OF ALL (E) SHEET METAL COMPONENTS, INCLUDING COPINGS, HEAD FLASHINGS, TRANSITIONAL FLASHINGS, WEEP SCREEDS AND SILL PANS. TYP. PREPARE (E) FRAMING TO RECEIVE (E) SHEET METAL COMPONENTS. TYP.
- 1.08 REMOVE & DISPOSE OF (E) SCUPPERS, GUTTERS AND DOWNSPOUTS. TYP.
- 1.09 REMOVE & DISPOSE OF (E) WINDOW SYSTEMS, INCLUDING ALL HARDWARE. TYP. MODIFY (E) FRAMING AS REQUIRED TO RECEIVE (E) WINDOW SYSTEMS. TYP.
- 1.10 REMOVE & DISPOSE OF (E) DOOR SYSTEMS, INCLUDING ALL HARDWARE. TYP. MODIFY (E) FRAMING AS REQUIRED TO RECEIVE (E) DOOR SYSTEMS. TYP.
- 1.11 REMOVE & DISPOSE OF (E) SKYLIGHT SYSTEM. TYP. PREPARE (E) FRAMING TO RECEIVE (E) SKYLIGHT SYSTEM. TYP.
- 1.12 REMOVE & DISPOSE OF (E) EXTERIOR PLASTER SYSTEM AS REQUIRED TO INSTALL (E) FLASHINGS, WINDOW, DOOR & VENT ASSEMBLIES. PROTECT UNDERLYING (E) FRAMING & (E) WEATHERPROOFING MEMBRANES IN PLACE & PREPARE FOR THE (E) IN (E) WEATHERPROOFING MEMBRANES. TYP.
- 1.13 REMOVE (E) EXTERIOR PLASTER FINISH COAT & PREPARE (E) BROWN COAT TO RECEIVE (E) ACRYLIC-FORTIFIED FINISH COAT PER MANUFACTURER'S REQUIREMENTS. TYP. PROTECT (E) PLASTER BROWN COAT, SCRATCH COAT, METAL LATH SYSTEM, AND WEATHER RESISTIVE BARRIER IN PLACE. TYP.
- 1.14 REMOVE & DISPOSE OF (E) INTERIOR FINISHES AS REQUIRED TO INSTALL (E) WINDOW, DOOR & VENT ASSEMBLIES. TYP.
- 1.15 REMOVE & DISPOSE OF (E) WALL VENT & HOOD ASSEMBLIES. PREPARE (E) FRAMING TO RECEIVE (E) VENTS. TYP.
- 1.16 REMOVE, STORE & PROTECT EXISTING WALL MOUNTED NUMBERS & OTHER MISCELLANEOUS SIGNAGE DURING CONSTRUCTION. TYP. CLEAN & REINSTALL AT (E) LOCATIONS WHEN REPAIR WORK IS COMPLETED. TYP.
- 1.17 REMOVE, STORE & PROTECT (E) SOLAR PANELS DURING CONSTRUCTION. CLEAN AND REINSTALL AT (E) LOCATIONS WHEN INSTALLATION OF (E) SUPPORTS IS COMPLETED. TYP.
- 1.18 REMOVE & DISPOSE OF (E) ROOF DRAIN ASSEMBLIES. CAP (E) PLUMBING INSIDE WALL & PATCH WALL FINISHES. TYP. PREPARE (E) ROOF SUBSTRATE TO RECEIVE (E) ROOF DRAIN. TYP.
- 1.19 REMOVE, STORE & PROTECT (E) WALL MOUNTED FIXTURES. CAP & REPAIR EXPOSED WIRING AS REQUIRED DURING CONSTRUCTION. TYP. CLEAN & REINSTALL FIXTURES AT (E) LOCATIONS WHEN REPAIR WORK IS COMPLETED. TYP.
- 1.20 REMOVE (E) PLASTER FINISH COAT & PREPARE (E) BROWN COAT TO RECEIVE (E) ACRYLIC FORTIFIED PLASTER FINISH COAT PER MANUFACTURER'S REQUIREMENTS. TYP.

THESE DRAWINGS ARE NOT AS-BUILT. DO NOT SCALE THESE DRAWINGS. THESE DRAWINGS REPRESENT THE INTENT OF THE DESIGN AND NOT THE AS-BUILT CONDITION. THE CONTRACTOR SHALL VERIFY THE AS-BUILT CONDITION OF THE EXISTING STRUCTURE AND MATERIALS. ANY DISCREPANCIES SHALL BE REPORTED TO THE ARCHITECT IMMEDIATELY. THE CONTRACTOR SHALL BE RESPONSIBLE FOR OBTAINING ALL NECESSARY PERMITS AND APPROVALS. THE CONTRACTOR SHALL BE RESPONSIBLE FOR PROTECTING ALL ADJACENT STRUCTURES AND UTILITIES. THE CONTRACTOR SHALL BE RESPONSIBLE FOR MAINTAINING ACCESS TO ALL ADJACENT PROPERTIES. THE CONTRACTOR SHALL BE RESPONSIBLE FOR OBTAINING ALL NECESSARY PERMITS AND APPROVALS. THE CONTRACTOR SHALL BE RESPONSIBLE FOR PROTECTING ALL ADJACENT STRUCTURES AND UTILITIES. THE CONTRACTOR SHALL BE RESPONSIBLE FOR MAINTAINING ACCESS TO ALL ADJACENT PROPERTIES. THE CONTRACTOR SHALL BE RESPONSIBLE FOR OBTAINING ALL NECESSARY PERMITS AND APPROVALS. THE CONTRACTOR SHALL BE RESPONSIBLE FOR PROTECTING ALL ADJACENT STRUCTURES AND UTILITIES. THE CONTRACTOR SHALL BE RESPONSIBLE FOR MAINTAINING ACCESS TO ALL ADJACENT PROPERTIES.

Consultants:



ADD-ALT 1: (E) COLUMN TO REMAIN & PROTECTED. TYP.

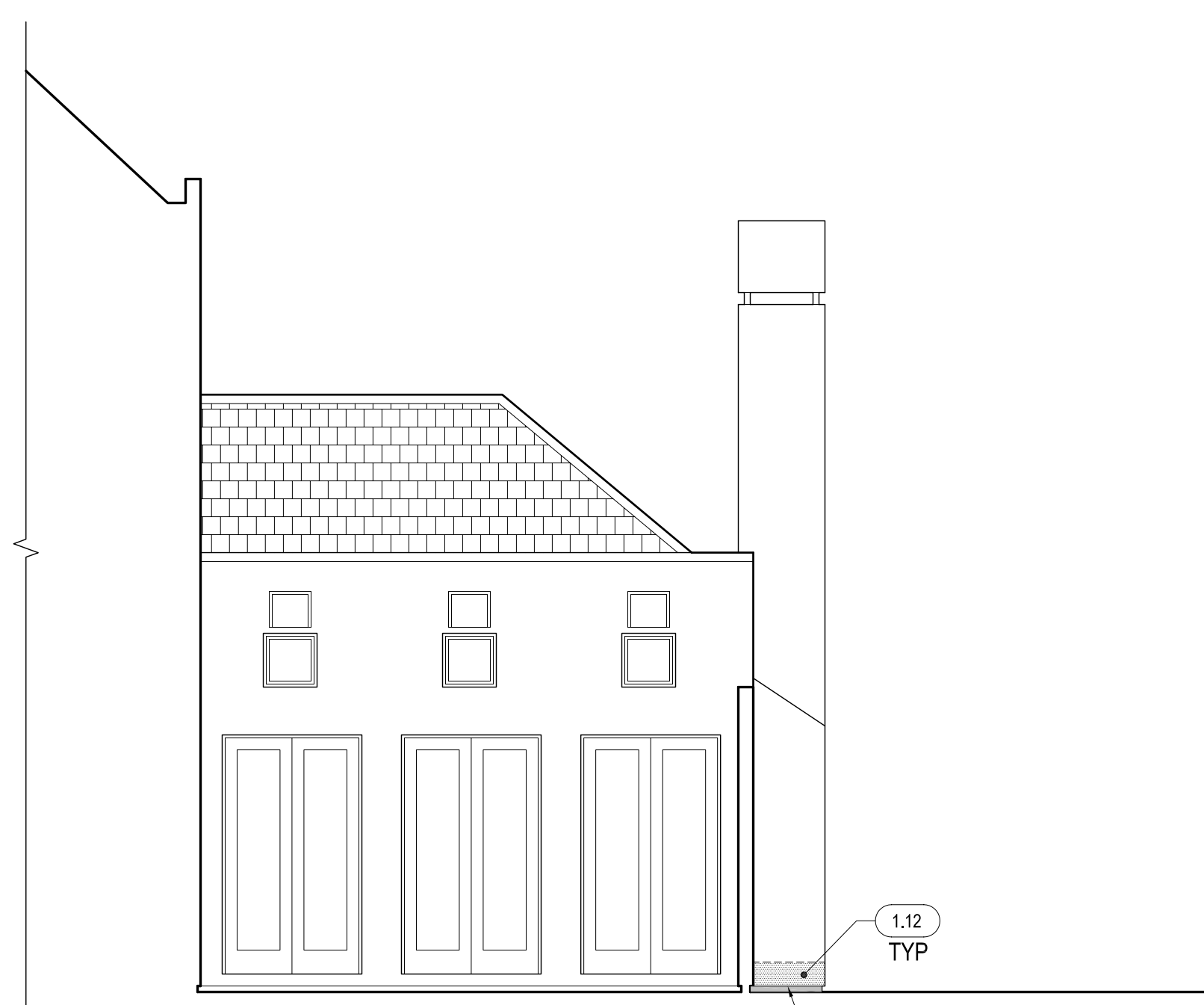
ADD-ALT 4: (E) WEEP SCREED (SHADED AREA). TYP.

ADD-ALT 1: (E) COLUMN TO REMAIN & PROTECTED. TYP.

ADD-ALT 4: (E) WEEP SCREED (SHADED AREA). TYP.

D NOT USED
SCALE: NA

C ADD-ALT DEMO UNIT 917 EAST ELEVATION (UNIT 918 WEST ELEVATION SIM)
SCALE: 1/4"=1'-0"

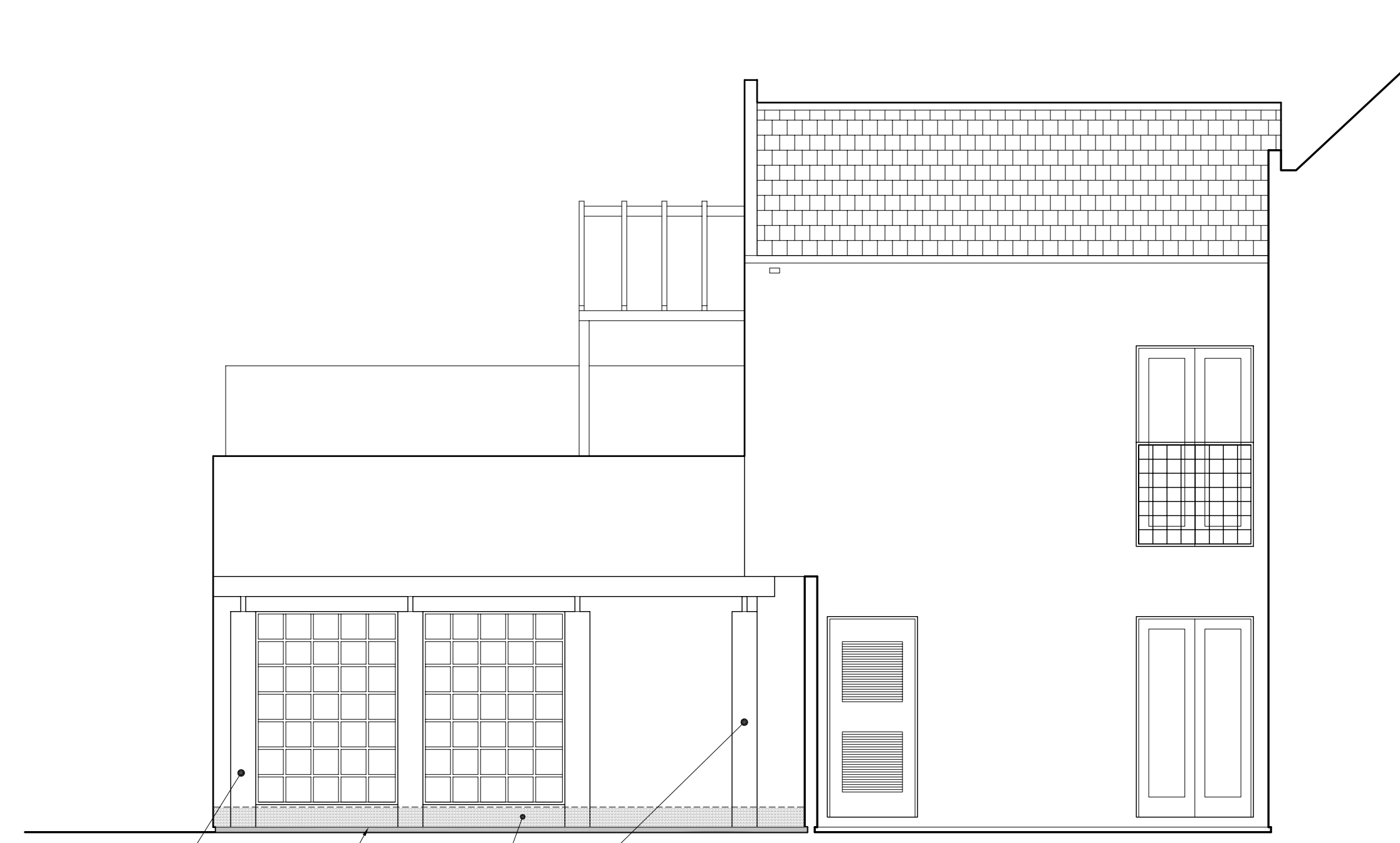


ADD-ALT 4: (E) WEEP SCREED (SHADED AREA). TYP.

ADD-ALT 1: (E) COLUMN TO REMAIN & PROTECTED. TYP.

ADD-ALT 4: (E) WEEP SCREED (SHADED AREA). TYP.

ADD-ALT 1: (E) COLUMN TO REMAIN & PROTECTED. TYP.



ADD-ALT 1: (E) COLUMN TO REMAIN & PROTECTED. TYP.

ADD-ALT 4: (E) WEEP SCREED (SHADED AREA). TYP.

ADD-ALT 1: (E) COLUMN TO REMAIN & PROTECTED. TYP.

F ADD-ALT DEMO COURTYARD ELEVATION (917 EAST, 918 WEST SIM.)
SCALE: 1/4"=1'-0"

E ADD-ALTERNATE DEMOLITION COURTYARD ELEVATION (917 WEST, 918 EAST SIM.)
SCALE: 1/4"=1'-0"

Stamps

Project

UCSB FACULTY HOUSING RENOVATION

UCSB
SANTA BARBARA, CALIFORNIA

PRELIMINARY 50% CD SET

NOT FOR CONSTRUCTION

Drawing Title

ADD-ALT DEMO ELEVATIONS

Revision Number Date

Issued for UCSB review 4/10/2009

Fremer Project No: 07006.00

Approved

Drawn By

Scale: 05 noted

Date: FEBRUARY 11, 2009

Sheet

D3.02ALT